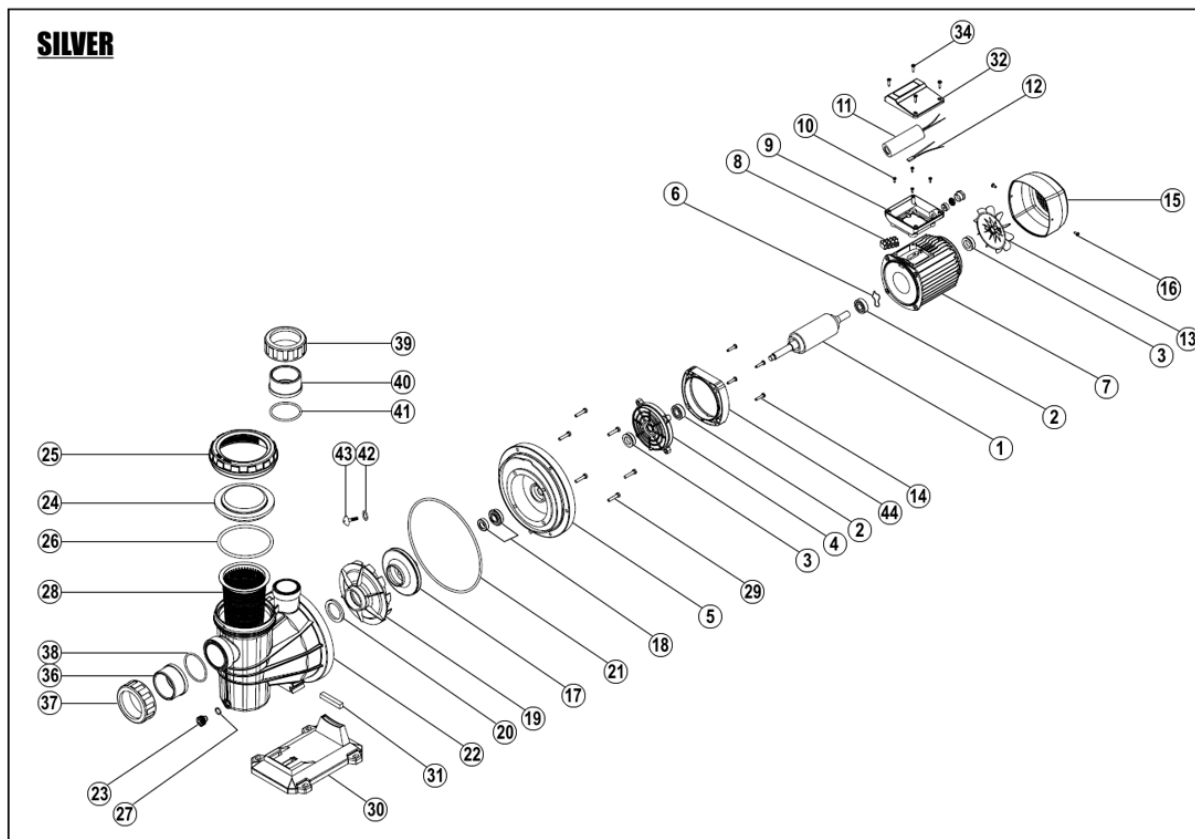


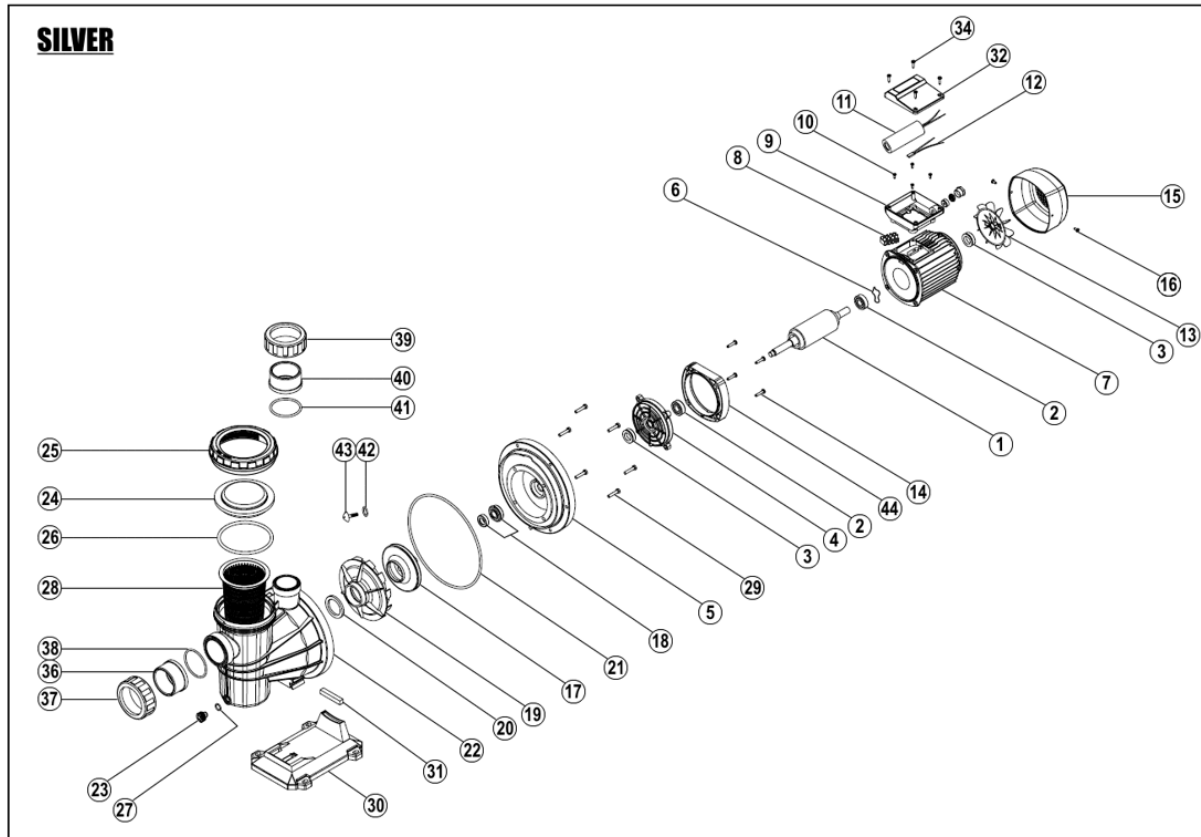
# SILVER



| Description      | Modèle            | Pos. | Code     |
|------------------|-------------------|------|----------|
| AXE              | SILVER 10T        | 1    | 5498     |
| AXE              | SILVER 12T        | 1    | 5498     |
| AXE              | SILVER 18M        | 1    | 5501     |
| AXE              | SILVER 12M        | 1    | 5497     |
| AXE              | SILVER 10M        | 1    | 5497     |
| AXE              | SILVER 15T        | 1    | 5500     |
| AXE              | SILVER 18T IE2    | 1    | 185883   |
| AXE              | SILVER 15M        | 1    | 5499     |
| AXE              | SILVER 22T IE2    | 1    | 185893   |
| AXE              | SILVER 22M        | 1    | 41200044 |
| ROULEMENT        | SILVER            | 2    | 1963     |
| ANNEAU-ELASTIQUE | SILVER (mod.2008) | 3    | 142699   |
| ANNEAU-ELASTIQUE | SILVER            | 3    | 349      |
| BOUCLIER         | SILVER (mod.2008) | 4    | 154835   |
| SUPPORT          | SILVER            | 5    | 129420   |
| RONDELLE         | SILVER            | 6    | 142381   |
| STATOR           | SILVER 22T        | 7    | 44000094 |

| Description       | Modèle              | Pos. | Code     |
|-------------------|---------------------|------|----------|
| STATOR            | SILVER 10M          | 7    | 165748   |
| STATOR            | SILVER 22M          | 7    | 165750   |
| STATOR            | SILVER 18T          | 7    | 5495     |
| STATOR            | SILVER 10/12 (T)    | 7    | 5491     |
| STATOR            | SILVER 18M          | 7    | 125363   |
| STATOR            | SILVER 15M          | 7    | 165749   |
| STATOR            | SILVER 15T          | 7    | 5493     |
| REGLETTE          | SILVER T            | 8    | 171808   |
| REGLETTE          | SILVER M            | 8    | 195131   |
| CAISSE            | SILVER (M)          | 9    | 133890   |
| VIS               | SILVER              | 10   | 1000119  |
| CONDENSATEUR 16mF | SILVER 10/15/18 (M) | 11   | 21000004 |
| CONDENSATEUR 16mF | SILVER 12M          | 11   | 21000004 |
| CONDENSATEUR 25mF | SILVER 22M          | 11   | 21000005 |
| KLIXON            | SILVER 22M          | 12   | 10000153 |
| KLIXON            | SILVER 10/12 (M)    | 12   | 10000244 |
| KLIXON            | SILVER 15M          | 12   | 10000241 |

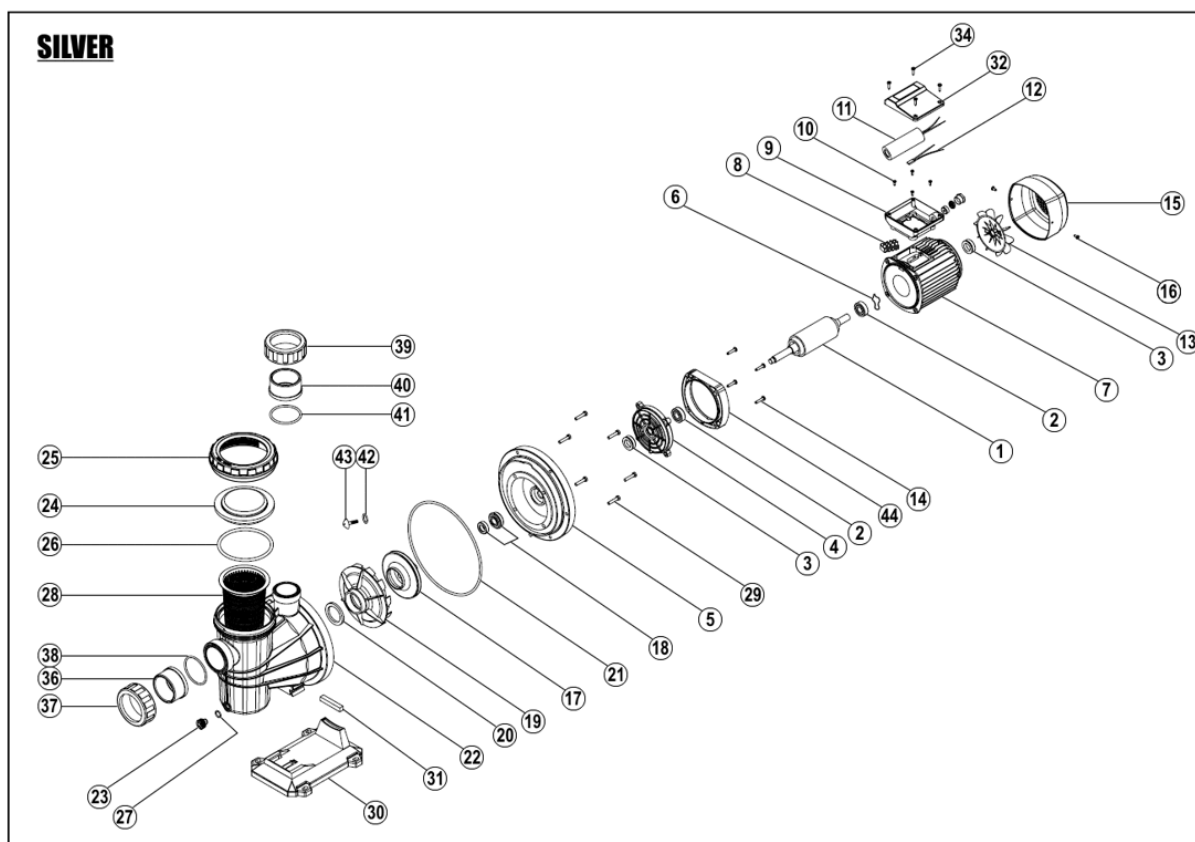
# SILVER



| Description           | Modèle            | Pos. | Code       |
|-----------------------|-------------------|------|------------|
| KLIXON                | SILVER 18M        | 12   | 14119      |
| VENTILATEUR           | SILVER            | 13   | 1040       |
| VIS                   | SILVER            | 14   | 28         |
| COUVERCLE VENTILATEUR | SILVER            | 15   | 10433      |
| VIS                   | SILVER            | 16   | 71         |
| TURBINE               | SILVER 18T        | 17   | 5848       |
| TURBINE               | SILVER 10T        | 17   | 5858       |
| TURBINE               | SILVER 10M        | 17   | 10488      |
| TURBINE               | SILVER 18M        | 17   | 10486      |
| TURBINE               | SILVER 22T        | 17   | 11100429   |
| TURBINE               | SILVER 22M        | 17   | 11000429   |
| TURBINE               | SILVER 12T        | 17   | 5846       |
| TURBINE               | SILVER 15T        | 17   | 5847       |
| TURBINE               | SILVER 15M        | 17   | 10485      |
| TURBINE               | SILVER 12M        | 17   | 10484      |
| GARNITURE MECANIQUE   | SILVER VOIR ANNEE | 18   | 8000074583 |
| DIFFUSEUR             | SILVER 18         | 19   | 10430      |

| Description      | Modèle          | Pos. | Code     |
|------------------|-----------------|------|----------|
| DIFFUSEUR        | SILVER 10/12/15 | 19   | 10429    |
| DIFFUSEUR        | SILVER 22       | 19   | 11000428 |
| JOINT            | SILVER          | 20   | 324      |
| JOINT TORIQUE    | SILVER          | 21   | 391      |
| CORPS COMPLET    | SILVER          | 22   | 11100469 |
| BOUCHON          | SILVER          | 23   | 10338    |
| COUVERCLE        | SILVER          | 24   | 11000457 |
| ECROU COUVERCLE  | SILVER          | 25   | 11000467 |
| JOINT TORIQUE    | SILVER          | 26   | 189284   |
| JOINT TORIQUE    | SILVER          | 27   | 390      |
| FILTRE           | SILVER          | 28   | 11000820 |
| VIS              | SILVER          | 29   | 10       |
| PIED             | SILVER          | 30   | 10431    |
| SILENBLOCK       | SILVER          | 31   | 6016     |
| COUVERCLE CAISSE | SILVER (M)      | 32   | 135136   |
| COUVERCLE CAISSE | SILVER (T)      | 32   | 11100478 |
| VIS              | SILVER          | 34   | 93       |

# SILVER



| Description          | Modèle            | Pos. | Code       |
|----------------------|-------------------|------|------------|
| CLE COUVERCLE        | SILVER            | 35   | 11000465   |
| RACCORD D63          | SILVER 18/22      | 36   | 130146     |
| RACCORD              | SILVER 10/12/15   | 36   | 127467     |
| ECROU D63            | SILVER            | 37   | 127465     |
| JOINT TORIQUE        | SILVER            | 38   | 399        |
| ECROU D50            | SILVER            | 39   | 10464      |
| RACCORD A COLLER D50 | SILVER            | 40   | 10463      |
| JOINT TORIQUE        | SILVER            | 41   | 350        |
| JOINT TORIQUE        | SILVER T          | 42   | 300        |
| VIS                  | SILVER T          | 43   | 5813       |
| SEPARATEUR           | SILVER 22 M/T     | 44   | 12200030   |
| REGLETTE             | SILVER            | 8    | 9020       |
| VIS                  | SILVER 22 M/T     | 14   | 1000044    |
| GARNITURE MECANIQUE  | SILVER VOIR ANNEE | 18   | 8000074574 |