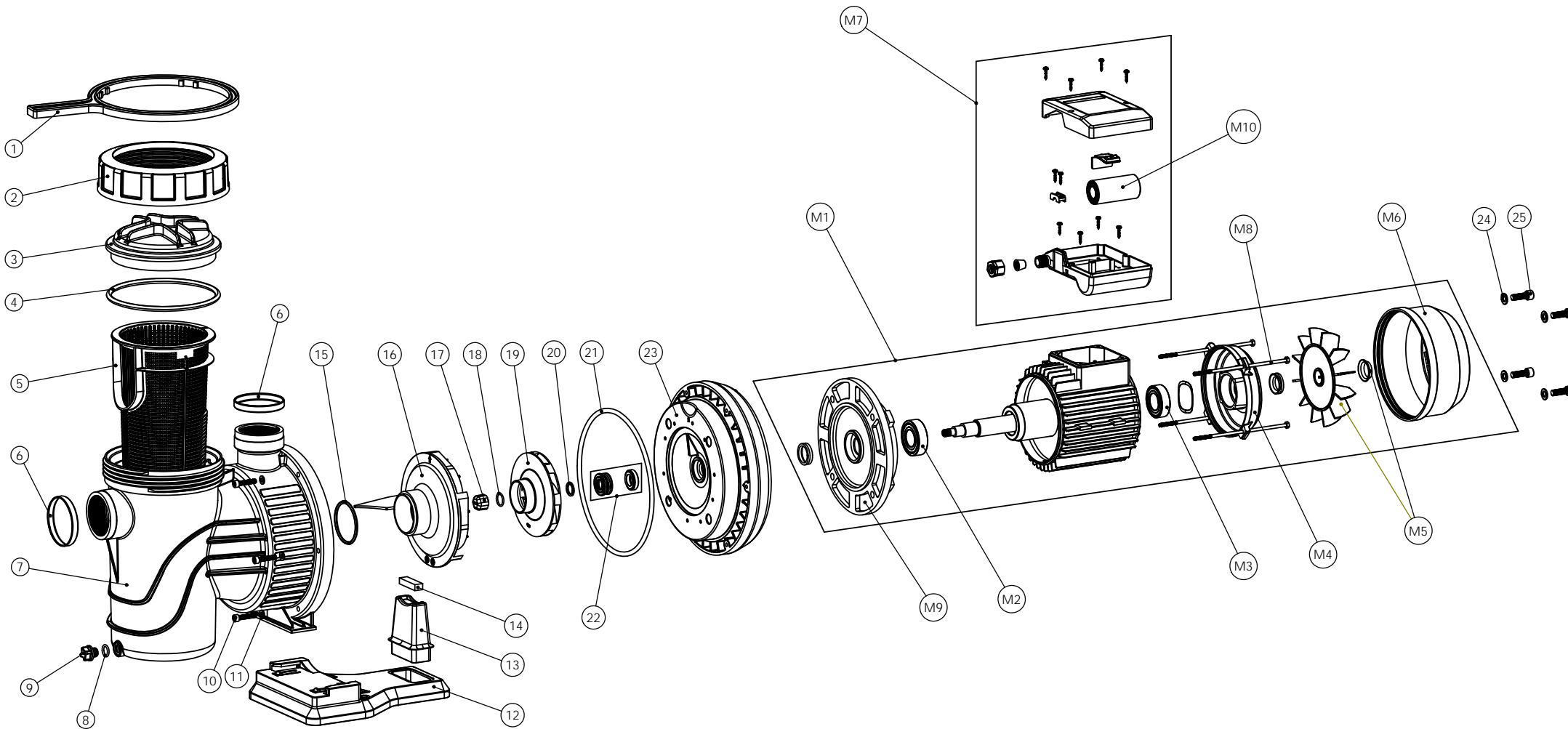


BOMBA ULTRAPLUS / MALAWI UT ULTRAPLUS / MALAWI UT PUMP



ULTRAPLUS		
Cv.	1~	3~
¾	M00516	M00517
1	M00518	M00519
1½	M00520	M00521
2	M00522	M00523
3	M00524	M00525

MALAWI UT		
Cv.	1~	3~
¾	M00572	M00573
1	M00574	M00575
1½	M00576	M00577
2	M00578	M00579
3	M00580	M00581

BOMBA ULTRAPLUS - MALAWI UT

ULTRAPLUS - MALAWI UT PUMP

De ¾ a 3 Cv.

Posición Item.	Cant Qty.	Descripción / Description	Código Code	
1	1	Llave tuerca tapa prefiltro / Pre-filter cover nut spanner	024309171R	
2	1	Tuerca tapa prefiltro / Pre-filter cover nut BLACK	00648R0001	
3	1	Tapa prefiltro cruceta / Pre-filter cover cross-shape	32768R0130	
4	1	Junta tórica tapa prefiltro D.151,7x6,99 EPDM 55 Sh.A / Pre-filter cover o'ring EPDM 55 Sh.A	720R1517069	
5	1	Cesto prefiltro / Pre-filter basket	38769R0202	
6	2	Anillo Inox. 2" Ø73x1,5x10 / Ring Inox. 2" Ø73x1,5x10	M00516R0204	
7	1	Cuerpo bomba ULTRAPLUS / Pump body ULTRAPLUS	M00516R0203	
8	1	Junta tórica tapón purga / Draining plug o'ring	723R0130025	
9	1	Tapón purga ¼" / Draining plug ¼"	19028R0103	
10	6	Tornillo M6x35 DIN-912 A-2 / Screw M6x35 DIN-912 A-2	70107R06035	
11	6	Arandela D6 DIN-125 A-2 / Washer D6 DIN-125 A-2	70119R06000	
12	1	Pie bomba / Pump foot	25461R0502	
13	1	Torreta grande / Pump base support	M00516R0503	
14	1	Silentblock 16x45x13 mm. (C.71)	15238R0004	
14	1	Silentblock 9x45x13 mm. (C.80)	15244R0004	
14	1	Silentblock 5x45x13 mm. (C.90)	27455R0100	
15	1	Junta difusor 56,74x3,53 / Difusor o'ring	723R0567035	
16	1	Difusor ½ - ¾ Cv. / Difusor	05091R0003	
16	1	Difusor 1 - 1½ - 2 Cv. / Difusor	05093R0003	
16	1	Difusor 2½ - 3 Cv. / Difusor	05090R0003	
17	1	Tapón rodete M8 Izq. (motores III) / Impeller cover (only three-phase motor)	20598R0011	
18	1	Junta tapón rodete 16x2 (motores III) / Impeller cover o'ring (only three-phase motor)	773R0160020	
19	1	Rodete ¾ Cv. (II) / Impeller	05092R0002	
19	1	Rodete ¾ Cv. (III) / Impeller	05086R0202	
19	1	Rodete 1 Cv. (II) / Impeller	05093R0002	
19	1	Rodete 1 Cv. (III) / Impeller	05087R0202	
19	1	Rodete 1½ Cv. (II) / Impeller	05094R0002	
19	1	Rodete 1½ Cv. (III) / Impeller	05088R0202	
19	1	Rodete 2 Cv. (II) / Impeller	05095R0002	
19	1	Rodete 2 Cv. (III) / Impeller	05089R0202	
19	1	Rodete 3 Cv. (II) / Impeller	M00524R0002	
19	1	Rodete 3 Cv. (III) / Impeller	M00525R0202	
20	1	Arandela distanciadora (todos menos 3 Cv.) / distancing washer (all without 3 HP)	05090R0010	
21	1	Junta tórica D.200x6,25 NBR 50 Sh. / O'ring D.200x6,25 NBR 50 Sh.	77AR2000062	
22	1	Junta mecánica fija LE 16,5x29,5x8 / Mechanical seal LE 16,5x29,5x8	25461R9601	
	1	Junta mecánica rotativa FA 15x32x12,8 / Mechanical seal FA 15x32x12,8		
23	1	Brida cierre mecánico / Mechanical seal clamp	M00516R0004	
24	4	Arandela D8 DIN-125 A2 / Washer D8 DIN-125 A2	70119R08000	
25	4	Tornillo M8x25 DIN-912 A2 / Screw M8x25 DIN-912 A2	70107R08025	
MOTOR			MOTOR VERNIS	MOTOR AURICPOOL
M1	1	Conjunto motor ¾ Cv. II / Motor unit ¾ Cv. II [C.71]	M00516R0475	
M1	1	Conjunto motor ¾ Cv. III / Motor unit ¾ Cv. III [C.71]	M00517R0475	
M1	1	Conjunto motor 1 Cv. II / Motor unit 1 Cv. II [C.71]	M00518R0475	
M1	1	Conjunto motor 1 Cv. III / Motor unit 1 Cv. III [C.71]	M00519R0475	
M1	1	Conjunto motor 1½ Cv. II / Motor unit 1½ Cv. II [C.80]	M00520R0475	
M1	1	Conjunto motor 1½ Cv. III / Motor unit 1½ Cv. III [C.80]	M00521R0475	
M1	1	Conjunto motor 2 Cv. II / Motor unit 2 Cv. II [C.80]	M00522R0475	
M1	1	Conjunto motor 2 Cv. III / Motor unit 2 Cv. III [C.80]	M00523R0475	
M1	1	Conjunto motor 3 Cv. II / Motor unit 3 Cv. II [C.90]	M00524R0475	

M1	1	Conjunto motor 3 Cv. III / Motor unit 3 Cv. III [C.80]	M00525R0475	
M2	1	Rodamiento delantero 6204 tipo 2RS C3 (C.71) / Front Bearing 6204 2RS C3 type (C.71)	20605R0110	
M2	1	Rodamiento delantero 6205 tipo 2RS C3 (C.80-90) / Front Bearing 6205 2RS C3 type (C.80-90)	08003R0316	
M3	1	Rodamiento trasero 6202 tipo 2RS C3 (C.71) / Rear Bearing 6202 2RS C3 type (C.71)	20597R0110	
M3	1	Rodamiento trasero 6204 tipo 2RS C3 (C.80) / Rear Bearing 6204 2RS C3 type (C.80)	20605R0110	
M3	1	Rodamiento trasero 6205 tipo 2RS C3 (C.90) / Rear Bearing 6205 2RS C3 type (C.90)	08003R0316	
M4	1	Tapa motor mecanizada C.71 c/cajera D.35 / Mec. Motor cover	M00516R0104	
M4	1	Tapa motor mecanizada C.80 c/cajera D.47 / Mec. Motor cover	M00520R0104	
M4	1	Tapa motor mecanizada C.90 c/cajera D.52 / Mec. Motor cover	22341R0104	
M5	1	Ventilador C.71 c/anilla eje D.15 / Fan + ring shaft	20599R0105	
M5	1	Ventilador C.80 c/anilla eje D.20 / Fan + ring shaft	20605R0105	
M5	1	Ventilador C.90 c/anilla eje D.24 / Fan + ring shaft	22341R0105	
M6	1	Tapa ventilador C.71 METALICA negra / Fan cover	M00516R0106	
M6	1	Tapa ventilador C.80 PLASTICO negra / Fan cover	M00520R0106	
M6	1	Tapa ventilador C.90 METALICA negra / Fan cover	22341R0106	
M7	1	Conjunto caja bornes (motor II) C.71 / Terminal box	HGS051R0108	05091R0108
M7	1	Conjunto caja bornes (motor II) C.80-90 / Terminal box	HGS151R0108	
M7	1	Conjunto caja bornes (motor III) C.71 / Terminal box	HGS053R0108	20600R0108
M7	1	Conjunto caja bornes (motor III) C.80-90 / Terminal box	HGS153R0108	
M8	4	Varilla motor C.71 / Motor tie	20599R0109	
M8	4	Varilla motor C.80 / Motor tie	20605R0109	
M8	4	Varilla motor C.90 / Motor tie	22341R0119	-
M8	4	Tornillo M6x30 DIN-912 A-2 (C.90) / Screw M6x30 DIN-912 A-2 (C.90)	-	70207R06030
M9	1	Brida mecanizada B5 C.71 / Mec. Motor bridle	HGS051R0103	
M9	1	Brida mecanizada B5 C.80 / Mec. Motor bridle	HGS151R0103	
M9	1	Brida mecanizada B5 C.90 / Mec. Motor bridle	HGS301R0103	M00524R0103
M10	1	Condensador 14 µF (¼ Cv.) / Capacitor 14 µF (¼ Cv.)	15746R0109	
M10	1	Condensador 16 µF (1 Cv.) / Capacitor 16 µF (1 Cv.)	15747R0109	
M10	1	Condensador 18 µF (1½ Cv.) / Capacitor 18 µF (1½ Cv.)	05092R0109	
M10	1	Condensador 32 µF (2 Cv.) / Capacitor 32 µF (2 Cv.)	20605R0129	
M10	1	Condensador 40 µF (3 Cv.) / Capacitor 40 µF (3 Cv.)	22341R0109	

Cv. / HP	Tamaño motor / Motor size
¾ - 1 Cv.	C.71
1½ - 2 - 3 Cv. III	C.80
3 Cv. II (230V.)	C.90